

TABLE OF CONTENTS

Ultimaker 2	1
<i>UM2 Nozzles</i>	1
<i>Heaters & Sensors</i>	10
<i>PTFE Couplers</i>	12
<i>Other UM Parts</i>	14

ULTIMAKER 2

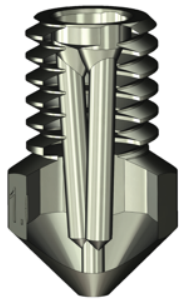
UM2 NOZZLES



UM2+ EVERLAST DIAMOND NOZZLE

DIAMOND tipped nozzle. We are supplying this nozzle to a German university. **Diamond** has exceptional thermal properties, far outshining any other known mineral or metal.

World's fastest and biggest
3D Solex WORLD CLASS



MATCHLESS

These nozzles will allow you to print spool after spool of ANY material. Our clients appreciate the following two features:

- 1) The tip will never wear out from printing
- 2) The tip is always "hot", so releases filaments better than any other nozzle.

There is a 1 year guarantee on this nozzle.

- 1) If it clogs up, we fix it.
- 2) If the tip wears out, you get a new nozzle.

This nozzle is built with our patented MATCHLESS technology. These parts inside the nozzle will wear out.

The guarantee cannot cover this worn out mechanism. In the event that you should irreversibly clog this nozzle, we will restore the nozzle and remove the Matchless core. The nozzle will then behave like any ordinary nozzle; speed-wise. The diamond tip will still be hot.

We soon also have 0.50mm DIAMOND! This is perfect for architects and engineers, for a sometimes better "relation" to the slicer in a metric model. Example when walls are 0.50 mm, 1.0mm, and so on. We are making this nozzle for Google and are now adding it to our catalog, for you.

Printing Carbon Fibre on a standard nozzle will destroy it completely in a few hours, or less than 500g filament.

This nozzle can print all day long, month after month.



UM2+ 5- ICE NOZZLE KIT W/ 0.40 EVERLAST RUBY

This great kit consists of 5 nozzles, for the UM2+ / Matchless / Olsson / E3D:
0.25-0.40-0.60-0.80 ICE Brass nozzles + 0.40 Everlast Ruby

This great kit consists of 5 nozzles, for the UM2+ / Matchless / Olsson Block / E3D:
0.25-0.40-0.60-0.80 ICE Brass nozzles + 0.40 Everlast Ruby

All the nozzles are brass nozzles. Except for the EVERLAST Ruby 0.40, they are coated with a hard and slippery material which makes cleaning a lot easier, and helps preventing plastic stick and being carried around the print.

These nozzles are standard nozzles except the Everlast which has the "Matchless" design of heating the filament.

This enables higher printing speeds and / or lower temperature, which again helps against dripping.

The ICE nozzles look a bit irregular on the surface due to the treatment, but this quickly evens out and does not affect printing.

The nozzles have a run-in period of 2 hours at 200C-225C, to harden, tempering the surface.

After that they should be used at max 265C. Higher temperatures than 265C will destroy the treatment and the nozzle is the just like any other nozzle!

ONLY the Everlast is recommended for abrasive materials, the other nozzles will wear out quickly.

Weight 0.05 kg
Dimensions 5 x 5 x 2 cm

[Read More](#)

SKU: 7072482001946

Price: € 143,00 € 99,00

Categories: [UM2 Nozzles](#), [Nozzles](#), [UM2 Nozzles](#)

Weight N/A
Dimensions N/A
Choose Size (mm) 0.50, 0.60, 0.80

[Read More](#)

Variations

SKU	Description	Choose Size (mm)	Price
7072482001182		0.50	€ 330,00
7072482001212		0.60	€ 330,00
7072482001731-1		0.80	€ 330,00

SKU: N/A

Price: € 330,00

Categories: [UM2 Nozzles](#), [Everlast](#)



0.80 mm
Matchless RACE

UM2 0.80 MM MATCHLESS

Optimized for 3D Solex V3 Block. Backwards compatible with "Olsson Block". This high tech nozzle will significantly increase plastic output. Alternatively, you can print cooler!

- Prints up to 4 times faster.
- Prints cooler, - 5-15 deg Celcius.
- 100% drop-in backwards compatible with "Olsson Block".
- Matchless Race Technology prints up to 4 times faster then a standard nozzle of the same size.
- Chrome coated Brass. Makes for easier outside cleaning.
- Precision manufacture at an ISO 9001 certified facility.

Weight 3 kg
Dimensions 8 x 6 x 1 cm
Filament Size 1.75mm, 2.85mm

[Read More](#)

Variations

SKU	Description	Filament Size	Price
7072482000802	Native Nozzle for 2.85mm filament. Precision engineered.	2.85mm	€ 14,00
7072482000901	Native nozzle for 1.75mm filament. Precision Engineering.	1.75mm	€ 14,00

SKU: N/A
Price: € 14,00
Categories: [UM2 Nozzles](#), [UM2 Nozzles](#)



0.60 mm
Matchless RACE

UM2 0.60MM MATCHLESS

Optimized for 3D Solex V3 Block. Backwards compatible with "Olsson Block". This high tech nozzle will significantly completing prints faster. Alternatively, you can print cooler!

- Prints up to 4 times faster than a standard 0,40mm nozzle.
- Prints cooler, - 5-15 deg Celcius.
- 100% drop-in backwards compatible with "Olsson Block".
- Matchless Race Technology prints up to 4 times faster then a standard nozzle of the same size.
- Chrome coated Brass. Makes for easier outside cleaning.
- Precision manufacture at an ISO 9001 certified facility.

Weight 2 kg
Dimensions 8 x 6 x 1 cm
Filament Size 1.75mm, 2.85mm

[Read More](#)

Variations

SKU	Description	Filament Size
2.85mm: 7072482000796	Native Nozzle for 2.85mm filament. Precision engineering.	2.85mm
1.75mm: 7072482000895	Native Nozzle for 1.75mm filament. Precision engineering.	1.75mm

SKU: N/A
Price: € 14,00
Categories: [UM2 Nozzles](#), [UM2 Nozzles](#)

ULTIMAKER Upgrades-3D Printer Nozzles



0.40 mm
Matchless RACE

UM2 0.40MM MATCHLESS

Optimized for 3D Solex V3 Block. Backwards compatible with "Olsson Block". This high tech nozzle will significantly increase plastic output, completing prints faster. Alternatively, you can print cooler!

Prints up to 3 times faster than a standard 0,40mm nozzle.
Prints cooler, - 5-15 deg Celcius.
100% drop-in backwards compatible with "Olsson Block".
-Matchless Race Technology prints up to 3 times faster then a standard nozzle of the same size.
-Chrome coated Brass. Makes for easier outside cleaning.
-Precision manufacture at an ISO 9001 certified facility.

Weight 0.005 kg
Dimensions 8 x 6 x 1 cm
Filament Size 1.75mm, 2.85mm

[Read More](#)

Variations

SKU	Description	Filament Size	Price
7072482000772	Native Nozzle for 2.85mm filament. Precision engineering.	2.85mm	€ 14,00
7072482000871	Native Nozzle for 1.75mm filament. Precision engineering.	1.75mm	€ 14,00

SKU: N/A
Price: € 14,00
Categories: [UM2 Nozzles](#), [UM2 Nozzles](#)



0.25 mm
Matchless

UM2 0.25MM MATCHLESS

Optimized for 3D Solex V3 Block. Backwards compatible with "Olsson Block".

For fine, detailed work.
100% drop-in backwards compatible with "Olsson Block".
-Matchless Race Technology prints up to 3 times faster then a standard nozzle of the same size. (not for 0.25 mm nozzle, the slow printing speed does not benefit from RACE).
-Chrome coated Brass. Makes for easier outside cleaning.
-Precision manufacture at an ISO 9001 certified facility.

Weight 2 kg
Dimensions 8 x 6 x 1 cm
Filament Size 1.75mm, 2.85mm

[Read More](#)

Variations

SKU	Description	Filament Size
7072482000765	Native Nozzle for 2.85mm filament. Precision engineering.	2.85mm
7072482000864	Native Nozzle for 1.75mm filament. Precision engineering.	1.75mm

SKU: N/A
Price: € 14,00
Categories: [UM2 Nozzles](#), [UM2 Nozzles](#)



2.0 mm
Matchless RACE

UM2 2.0MM MATCHLESS

Optimized for 3D Solex V3 Block. Backwards compatible with "Olsson Block". This high tech nozzle will significantly increase plastic output, completing prints faster. Alternatively, you can print cooler!

- Prints a 2.0 mm wide layer!
- Prints cooler, - 5-15 deg Celcius.
- 100% drop-in backwards compatible with "Olsson Block".
- Matchless Race Technology prints up to 4 times faster then a standard nozzle of the same size.
- Chrome coated Brass. Makes for easier outside cleaning.
- Precision manufacture at an ISO 9001 certified facility.

Weight 2 kg
Dimensions 8 x 6 x 1 cm
Filament Size 1.75mm, 2.85mm

[Read More](#)

Variations

SKU	Description	Filament Size	Price
7072482000833	Native Nozzle for 2.85mm filament. Precision engineering.	2.85mm	€ 14,00
7072482000932	Native Nozzle for 1.75mm filament. Precision engineering.	1.75mm	€ 14,00

SKU: N/A
Price: € 14,00
Categories: [UM2 Nozzles](#), [UM2 Nozzles](#)



1.5 mm
Matchless RACE

UM2 1.5MM MATCHLESS

Optimized for 3D Solex V3 Block. Backwards compatible with "Olsson Block". This high tech nozzle will significantly increase plastic output, completing prints faster. Alternatively, you can print cooler!

- Prints a 1.5mm wide layer!
- Prints cooler, - 5-15 deg Celcius.
- 100% drop-in backwards compatible with "Olsson Block".
- Matchless Race Technology prints up to 4 times faster then a standard nozzle of the same size.
- Chrome coated Brass. Makes for easier outside cleaning.
- Precision manufacture at an ISO 9001 certified facility.

Weight 2 kg
Dimensions 8 x 6 x 1 cm
Filament Size 1.75mm, 2.85mm

[Read More](#)

Variations

SKU	Description	Filament Size
7072482000826	Native Nozzle for 2.85mm filament. Precision engineering.	2.85mm
7072482000925	Native Nozzle for 1.75mm filament. Precision engineering.	1.75mm

SKU: N/A
Price: € 14,00
Categories: [UM2 Nozzles](#), [UM2 Nozzles](#)

ULTIMAKER Upgrades-3D Printer Nozzles

**UM2 1.0MM MATCHLESS**

Optimized for 3D Solex V3 Block. Backwards compatible with "Olsson Block". This high tech nozzle will significantly increase plastic output. Alternatively, you can print cooler!

Prints up to 4 times faster.
Prints cooler, - 5-15 deg Celcius.
100% drop-in backwards compatible with "Olsson Block".
-Matchless Race Technology prints up to 4 times faster then a standard nozzle of the same size.
-Chrome coated Brass. Makes for easier outside cleaning.
-Precision manufacture at an ISO 9001 certified facility.

Weight 3 kg
Dimensions 8 x 6 x 1 cm
Filament Size 1.75mm, 2.85mm

[Read More](#)

Variations

SKU	Description	Filament Size	Price
7072482000819	Native Nozzle for 2.85mm filament. Precision engineered.	2.85mm	€ 14,00 € 10,00
7072482000918	Native nozzle for 1.75mm filament. Precision Engineering.	1.75mm	€ 14,00

SKU: N/A

Price: € 10,00 - € 14,00

Categories: [UM2 Nozzles](#), [UM2 Nozzles](#)

**SS 50 "ICE" - 0.50MM NOZZLE**

Helps preventing PLA from sticking to your nozzle Will not carry blobs of PLA or any other filament around your print! Super easy [Cold Pull!](#)

0.50mm size can have an advantage with certain difficult, fibrous filaments, less clogging.

Lasts even longer than stainless steel nozzles. For some users it will "payback" after first use!

(Ill. image- actual image coming).
For UM2/ UM2+

This fantastic newly developed product by 3D Solex has a core of stainless steel and a multi-component molecularly interlocked tempered surface with 2 main advantages:

1) PLA (or any other filament we know of) simply refuses to stick to it.

2) Cold Pulls work so much better, the inside of the nozzle is "ICE" too.

3) Its surface is much more wear resistant than that of stainless steel, so it will last much longer printing abrasive filaments. Compared with brass, - it is in a class of its own.

It also works exceptionally well with chemically challenging chemicals, like glow, flexible materials, + many more. These are the three fantastic advantages of this nozzle.

Now blobs of filament will not be carried around and depositet on your print.

It still prints slower than a brass nozzle.

Downside: A stainless steel based nozzle will not allow you to print as fast as a brass one.

Use: Run-in period of 2 hours at max 220C. This hardens/temperes it, after that, Max temp 280C.

For UM2 w/Olsson Block UM2+, Matchless V3.

Much stronger than steel nozzle. Not as fast as a brass nozzle.

[Read More](#)

SKU: 7072482000161

Price: € 16,00 € 12,50

Categories: [UM2 Nozzles](#), [UM2 Nozzles](#)

ULTIMAKER Upgrades-3D Printer Nozzles

**SS 40 "ICE" - 0.40MM NOZZLE**

Helps prevent PLA sticking to nozzle Will not carry blobs of PLA or any other filament around your print!

Super easy [Cold Pull!](#)

Lasts even longer than stainless steel nozzles. For some users it will "payback" after first use!

(Ill. image- actual image coming).

For UM2/ UM2+

This fantastic newly developed product by 3D Solex has a core of stainless steel and a multi-component molecularly interlocked tempered surface with 2 main advantages:

1) PLA (or any other filament we know of) simply refuses to stick to it.

2) Cold Pulls work so much better, the inside of the nozzle is "ICE" too.

3) Its surface is much more wear resistant than that of stainless steel, so it will last much longer printing abrasive filaments.

Compared with brass, - it is in a class of its own.

It also works exceptionally well with chemically challenging chemicals, like glow, flexible materials, + many more.

These are the three fantastic advantages of this nozzle.

Now blobs of filament will not be carried around and depositet on your print.

It still prints slower than a brass nozzle.

Downside: A stainless steel based nozzle will not allow you to print as fast as a brass one.

Use: Run-in period of 2 hours at max 220C. This hardens/temper it, after that, Max temp 280C.

For UM2 w/Olsson Block UM2+, Matchless V3.

Much stronger than steel nozzle. Not as fast as a brass nozzle.

[Read More](#)

SKU: 7072482000154

Price: € 16,00 € 12,50

Categories: [UM2 Nozzles](#), [UM2 Nozzles](#)

**RSB JET NOZZLE 0.25-0.80MM**

Standard Nozzle. High quality. Made in Norway. If your print crashes, you cannot blame it on this nozzle, it is likely something else.

Fits UM2- UM2+, E3D, Olsson Block, Matchless V3

Weight 0.003 kg

Select Size (mm) 0.10, 0.15, 0.25, 0.40, 0.60, 0.80, 1.0

[Read More](#)

Variations

SKU	Description	Select Size (mm)	Price
7072482000123		0.25	€ 8,00
7072482000147		0.40	€ 8,00
7072482000185		0.60	€ 8,00
7072482000222		0.80	€ 8,00

SKU: N/A

Price: € 8,00

Categories: [UM2 Nozzles](#), [UM2 Nozzles](#)



RSB "ICE" SURFACE NOZZLE 0.25-1.00

NEW Nozzle from 3D Solex!

Slippery "ICE" nozzle, with brass core. Optimized for surface prints. Max temp 275C. First 2 hours max 220C to temper the nozzle. Super Easy Cold-Pulls!

Has an outer geometry optimized for surfaces. This is a brass nozzle (excellent temperature properties) with a hard coating of a slippery "ICE" coating. This coating prevents hot plastic sticking to it! A super nozzle!

If you heat it to more than 275C, it destroys this function and the nozzle acts like a "normal" nozzle. IMPORTANT: This ICE nozzle looks like a (dark) steel nozzle, but it is a brass nozzle! This means it prints just like a standard brass nozzle (several times faster than steel nozzles). Fits UM2- UM2+, Olsson Block, Matchless V3

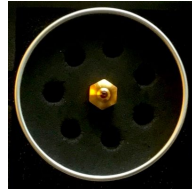
Weight N/A
Select Size (mm) 0.25, 0.40, 0.60, 0.80, 1.00

[Read More](#)

Variations

SKU	Description	Select Size (mm)	Price
7072482000178		0.40	€ 12,00
7072482000130		0.25	€ 12,00
7072482000208	Prints much more plastic than 0.40 nozzle, almost twice opening area of nozzle. Super slippery surface.	0.60	€ 12,00
7072482000246	Super slippery Surface! Super easy Cold pull!	0.80	€ 12,00
7072482000277	Prints slowly, as it has not the Matchless Race technology. Super slippery surface!	1.00	€ 12,00

SKU: N/A
Price: € 12,00
Categories: [UM2 Nozzles](#), [UM2 Nozzles](#)



EVERLAST UM2+ NOZZLES 0.25-0.80 MM

Super hard and super fast nozzles for UM2+.

These nozzle will allow you to print spool after spool of Carbon Fibre, Bronzefill and other abrasive materials. They also leave a particularly beautiful print with PLA, ABS and other filaments. Printing Carbon Fibre on a standard nozzle will destroy it completely in a few hours, or less than 500g filament, but what is more, you will not be able to finish even one print if it is big enough! This nozzle can print all day long, week after week. Print at 5-15 degrees higher temperature (PLA). Many users experience that the EVERLAST "paid back" after 1 time use only!

Weight 0.02 kg
Choose Size (mm) 0.25, 0.40, 0.50, 0.60, 0.80, 1.20

[Read More](#)

Variations

SKU	Description	Choose Size (mm)	Price
7072482001137	0.40mm Everlast Matchless. "normal" size.	0.40	€ 74,00
7072482001120	0.25mm Everlast nozzle. For tiny, detailed work.	0.25	€ 69,00
7072482001144	0.60mm Everlast Matchless. Oversize.. will help you if fibres tend to get "stuck" in nozzle. Use with line width setting 0.40-0.65.	0.60	€ 74,00
7072482001151	0.80mm Everlast Matchless. The area of the exit of this nozzle is about 4 times bigger than that of 0.40 nozzle. You can finish a print many times faster compared to using a standard 0.40mm core.	0.80	€ 74,00

SKU: N/A
Price: € 69,00 - € 74,00
Categories: [Ultimaker 2](#), [UM2 Nozzles](#), [Everlast](#), [UM2 Nozzles](#)

ULTIMAKER Upgrades-3D Printer Nozzles

**0.15MM MICRO NOZZLE**

This is the World's 2.nd smallest Nozzle. They are individually drilled and checked, and very difficult to use.

For Experts Only. Needs geared feeder. (Bondtech, Iroberti/Meduz, UM2+).

YOU will NOT be able to use this item with an original UM2.

This is the World's 2.nd smallest 3d printer nozzle. They are individually drilled and checked, and extremely difficult to manufacture.

These are difficult to use, and we recommend that you can print with an 0.25 nozzle "blindfoldedly" before using this one. Prints at lower temp (190 - 205C), since the material stays long time inside. Do not change material type without "Cold Pulls" in between.

Use Cold Pull before and after every print. This cleans out the nozzle.

What is this nozzle used for?

- Kanji, Japanese art writing
- Custom PCB manufacture
- Miniature drone parts
- Miniature tools and gadgets
- Other use

World's smallest drill is made with our 0.25mm nozzle. The 0.15mm has the surface area (opening size) of only about 30% of a 0.25mm hole.

A 0.40mm nozzle has a 15 times higher plastic output than the 0.10mm 3D Solex Micro. This nozzle will not work with an ungeared feeder like UM2 (not "+"), or without a high tech feeder like Bondtech. Made in Norway by hand, using a Swiss "drill" and German tools.

<https://www.youtube.com/watch?v=gTb9FtcpVol>

Weight 2 kg
Dimensions 8 x 6 x 1 cm

[Read More](#)

SKU: 7072482000109

Price: € 39,00

Categories: [UM2 Nozzles](#), [UM2 Nozzles](#)

**0.10MM SUB MICRO**

This is the World's smallest Nozzle. They are individually drilled and checked, and very difficult to use.

For Experts Only. Needs geared feeder. (Bondtech, Iroberti/Meduz, UM2+).

YOU will NOT be able to use this item with an original UM2.

This is the World's smallest 3d printer nozzle. They are individually drilled and checked, and extremely difficult to manufacture.

These are difficult to use, and we recommend that you can print with an 0.15 nozzle "blindfoldedly" before using this one. Prints at lower temp (190 - 205C), since the material stays long time inside. Do not change material type without "Cold Pulls" in between.

Use Cold Pull before and after every print. This cleans out the nozzle.

What is this nozzle used for?

- Kanji, Japanese art writing
- Custom PCB manufacture
- Miniature drone parts
- Miniature tools and gadgets
- Other use

World's smallest drill is made with our 0.25mm nozzle. The 0.10. has the surface area (opening size) of only about 14% of a 0.25mm hole.

A 0.40mm nozzle has a 15 times higher plastic output than the 0.10mm 3D Solex Micro. This nozzle will not work with an ungeared feeder like UM2 (not "+"), or without a high tech feeder like Bondtech. Made in Norway by hand, using a Swiss "drill" and German tools.

<https://www.youtube.com/watch?v=gTb9FtcpVol>

Weight 2 kg
Dimensions 8 x 6 x 1 cm

[Read More](#)

SKU: 7072482000086

Price: € 49,00

Categories: [UM2 Nozzles](#), [UM2 Nozzles](#)

HEATERS & SENSORS



PT100 TEMP SENSOR

Individually tested sensor cable. 1 Year guarantee.

This individually tested Pt100 for UM2/+ is of a high quality.

We issue therefore a 1 year guarantee, even though it is a consumable item. We know how fiddly the changing of this cable is!

Beware of cheap imitations of this quality Chinese product!

Weight 0.05 kg

Dimensions 15 x 15 x 1 cm

[Read More](#)

SKU: 7072482000383

Price: € 35,00

Categories: [Ultimaker 2](#), [Heaters & Sensors](#)



50W HEATER UM2/+

Individually tested heater cable. We know how horrible it is to change it.
1 Year guarantee. Not for use on clone blocks.

This product is a consumable and as such has no guarantee, much like tires of a car. If it breaks immediately, it is replaced. 3d Solex however issues a 12 month guarantee.

We know how time consuming it can be to change a heater!

Warning: May not work in "Olsson Block" clone!

The calibre of the sensor holes are sometimes out of spec. They need manufacture to tolerances within 6/100 of a millimeter. If the hole is too large, the heaters will not be able to transfer energy, and burn out very brightly inside your block!

When you have a 50W heater, your head will heat up incredibly fast!

The theoretical downside, is that we cannot guarantee that it will work when there will ever (?) be a dual upgrade for UM2 which needs 2 heaters. It may then be approaching the limit of the available power of the machine.

Weight 14 kg

Dimensions 8 x 6 x 1 cm

[Read More](#)

SKU: 7072482000451

Price: € 33,00

Categories: [Ultimaker 2](#), [Heaters & Sensors](#)



40W HEATER UM2/+

Individually tested heater cable. We know how horrible it is to change it.

1 Year guarantee. Not recommended for clone blocks.

This product is a consumable and as such has no guarantee, much like tires of a car. If it breaks immediately, it is replaced. 3d Solex however issues a 12 month guarantee.

We know how time consuming it can be to change a heater!

Warning: May not work in "Olsson Block" clone! The calibre of the sensor holes are sometimes out of spec. They need manufacture to tolerances within 6/100 of a millimeter. If the hole is too large, the heaters will not be able to transfer energy, and burn out very brightly inside your block!

[Read More](#)

SKU: 7072482000444

Price: € 31,00

Categories: [Ultimaker 2](#), [Heaters & Sensors](#)



35W HEATER UM2/+

Individually tested heater cable. We know how horrible it is to change it.

1 Year guarantee.

This product is a consumable and as such has no guarantee, much like tires of a car. If it breaks immediately, it is replaced. 3d Solex however issues a 12 month guarantee.

We know how time consuming it can be to change a heater!

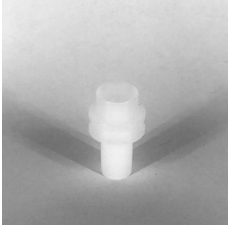
[Read More](#)

SKU: 7072482000420

Price: € 28,00

Categories: [Ultimaker 2](#), [Heaters & Sensors](#)

PTFE COUPLERS



TFN PTFE COUPLER UMO

Improved PTFE part for UMO. A very handy spare part to have. Image is illustration only. Product is different.

Replacement PTFE coupler for Ultimaker ORIGINAL ONLY!
This item is improved so filament will not so easily be stuck when inserted.

Weight 0.2 kg
Dimensions 5 x 3 x 1 cm
Filament Size 1.75mm, 2.85mm

[Read More](#)

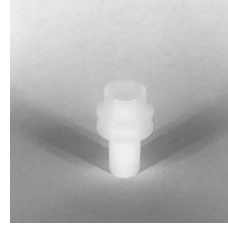
Variations

SKU	Description	Filament Size	Price
7072482000345-1	For 2.85mm filament	2.85mm	€ 15,00
7072482000352-1	For 1.75mm filament	1.75mm	€ 15,00

SKU: N/A

Price: € 15,00

Categories: [Other UM Parts](#), [PTFE Couplers](#)



TFN PTFE COUPLER UM2/+

Improved PTFE part for UM2/+. A very handy spare part to have.

Replacement PTFE coupler for UM2 & UM2+.
This item is improved so filament will not so easily be stuck when inserted.

Weight N/A
Dimensions N/A
Filament Size 1.75mm, 2.85mm

[Read More](#)

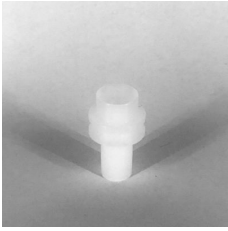
Variations

SKU	Description	Filament Size	Price
7072482000345	For 2.85mm filament	2.85mm	€ 15,00
7072482000352	For 1.75mm filament	1.75mm	€ 15,00

SKU: N/A

Price: € 15,00

Categories: [Other UM Parts](#), [PTFE Couplers](#)

**TF2K**

High Temperature PTFE upgrade. Allows you to print at 290C (requires firmware upgrade for temp above 260C). Printing ABS at 260C, it will last "for ever". Contains PTFE coupler & I2K chip.

Print as much as you can for 6 months at 290C or less. If it "melts, coupler squeeze" before this time we replace it. That is how confident we are! No charge, no outbound shipping. If it is only physically worn on its inside, we replace it with a 50% discount. I2K is never replaced. Works with ALL filaments known to us as of October 19th 2016. Orders taken now, this product will sell out in periods. Consists of I2K wafer chip & TFT255C in combination.

Weight	0.006 kg
Dimensions	6 x 3 x 1 cm
Filamen Size	1.75mm, 2.85mm

[Read More](#)

Variations

SKU	Description	Filamen Size	Price
7072482000369		2.85mm	€ 28,00
7072482000376		1.75mm	€ 28,00

SKU: N/A

Price: € 28,00

Categories: [Ultimaker 2](#), [PTFE Couplers](#)

**I2K**

One of our coolest items! Sold to universities and matter hackers world wide! manufactured from a US-made engineering plastic. It serves as an insulator between the coupler and the hot end. With it you can print at 295C "all day long".

Very useful! Great pay-back! Will save you at least 1, probably many hot end assemblies! Fact: bought together with our own PTFE coupler in a kit named [TF2K](#), we guarantee for 6months unlimited printing (excludes physical abrasion of PTFE). If you print PLA or any non-"filled" filament, your PTFE will last more than 1.000 hours continuous. Usage: Unplug PTFE from steel coupler, insert I2K, re-insert PTFE. Finished. Stop the printer, be turned all the way down to block, and only half turn back up allowed for syringe cleaning. This precision machined upgrade insulates the Teflon coupler from the hot end, preventing the Teflon from deforming, enabling the Teflon coupler to live for a long time. (image is from engineering world)

Teflon will still deform, but much more slowly. It's underside is no longer in contact with the Hot End, but on retractions, the Teflon still touches the inside wall.

Over time the Teflon still forfeits sufficiently of it's properties to start imploding, "squeezing" the filament and hot retracted plastic.

This part is in shape of a "wafer chip" and installs easily together with "Matchmaker". It is a perfect fit, so your SS coupler (the steel item with the radial holes in it) never gets dirty, clean inside.

HOW TO INSTALL - RIGHTLY! I2K Chip is Inside under Teflon

The I2K will save your PTFE Teflon coupler from deforming for a long time, and prevent the need for print head assembly rebuilds. We have 1.000+ hours at 260C varied printing, without the I2K, the PTFE deforms, deforming. A lot of retractions @260+ influences longevity of the Teflon negatively. The I2K itself can take 300C continuously, and will outlast your printer if you print at normal temperatures.

The I2K rests inside the steel coupler with the radial holes. It protects the PTFE from the hot end. Attention: The steel coupler is screwed down all the way, then back up until it just adjust dual setup, if needed. This makes higher pressure.

WRONG- Steel Coupler not far enough down. May cause leaks.

Weight	N/A
Filament Size	175mm, 2.85mm

[Read More](#)

Variations

SKU	Description	Filament Size
7072482000338	For 2,85mm filament use	2.85mm
7072482000536	For 1.75mm UM2 conversion.	175mm

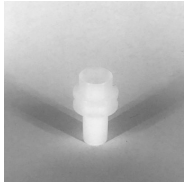
SKU: N/A

Price: € 15,00

Categories: [Other UM Parts](#), [PTFE Couplers](#)

OTHER UM PARTS

Other parts



TFN PTFE COUPLER UMO

Improved PTFE part for UMO. A very handy spare part to have. Image is illustration only. Product is different.

Replacement PTFE coupler for Ultimaker ORIGINAL ONLY!
This item is improved so filament will not so easily be stuck when inserted.

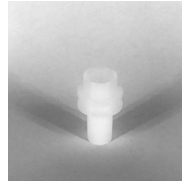
Weight 0.2 kg
Dimensions 5 x 3 x 1 cm
Filament Size 1.75mm, 2.85mm

[Read More](#)

Variations

SKU	Description	Filament Size	Price
7072482000345-1	For 2.85mm filament	2.85mm	€ 15,00
7072482000352-1	For 1.75mm filament	1.75mm	€ 15,00

SKU: N/A
Price: € 15,00
Categories: [Other UM Parts](#), [PTFE Couplers](#)



TFN PTFE COUPLER UM2/+

Improved PTFE part for UM2/+. A very handy spare part to have.

Replacement PTFE coupler for UM2 & UM2+.
This item is improved so filament will not so easily be stuck when inserted.

Weight N/A
Dimensions N/A
Filament Size 1.75mm, 2.85mm

[Read More](#)

Variations

SKU	Description	Filament Size	Price
7072482000345	For 2.85mm filament	2.85mm	€ 15,00
7072482000352	For 1.75mm filament	1.75mm	€ 15,00

SKU: N/A
Price: € 15,00
Categories: [Other UM Parts](#), [PTFE Couplers](#)



I2K

One of our coolest items! Sold to universities and matter hackers world wide! This product is manufactured from a US-made engineering plastic. It serves as an insulator between the PTFE coupler and the hot end. With it you can print at 295C "all day long".

Very useful! Great pay-back! Will save you at least 1, probably many hot end re-builds!
 Fact: bought together with our own PTFE coupler in i kit named [TF2K](#), we guarantee the PTFE for 6months unlimited printing (excludes physical abrasion of PTFE). If you print with ABS or PLA or any non-"filled" filament, your PTFE will last more than 1.000 hours continuous use.
 Usage: Unplug PTFE from steel coupler, insert I2K, re-insert PTFE. Finished. Steel coupler must be turned all the way down to block, and only half turn back up allowed for sync in dual setup. This precision machined upgrade insulates the Teflon coupler from the hot end top end, enabling the Teflon coupler to live for a long time. (image is from engineering sample). The Teflon will still deform, but much more slowly.

It's underside is no longer in contact with the Hot End, but on retractions, the hot plastic still touches the inside wall.

Over time the Teflon still forfeits sufficiently of it's properties to start imploding and "squeezing" the filament and hot retracted plastic.

This part is in shape of a "wafer chip" and installs easily together with "Matchless V3 Block". It is a perfect fit, so your SS coupler (the steel item with the radial holes in it) needs to be totally clean inside.

HOW TO INSTALL - RIGHTLY! I2K Chip is Inside under Teflon

The I2K will save your PTFE Teflon coupler from deforming for a long time, and save you from print head assembly rebuilds. We have 1.000+ hours at 260C varied printing, and no deforming. A lot of retractions @260+ influences longevity of the Teflon negatively. The chip itself can take 300C continuously, and will outlast your printer if you print at maximum this temperature.

The I2K rests inside the steel coupler with the radial holes. It protects the PTFE from the hot end. Attention: The steel coupler is screwed down all the way, then back up until 1/2 turn to adjust dual setup, if needed. This makes higher pressure.

WRONG- Steel Coupler not far enough down. May cause leaks.

Weight

N/A

Filament Size

175mm, 2.85mm

[Read More](#)

Variations

SKU	Description	Filament Size	Price
7072482000338	For 2,85mm filament use	2.85mm	€ 15,00
7072482000536	For 1.75mm UM2 convesion.	175mm	€ 15,00

SKU: N/A

Price: € 15,00

Categories: [Other UM Parts](#), [PTFE Couplers](#)



STEEL COUPLER V2 FOR UM2

Greatly improved spare part! Very handy to have lying around!

This is an improved version of the steel coupler. It is strong and will not break.

Very handy spare to have on hand! More than 800 sold!

[Read More](#)

SKU: 7072482000321

Price: € 15,00

Category: [Other UM Parts](#)

ULTIMAKER Upgrades-3D Printer Nozzles

**DDG BONDTECH FOR ULTIMAKER 2+**

DDG Extruder for Ultimaker2 that feeds filament without grinding and with a very firm grip of the filament that will allow for faster printing without under-extrusion problems. Fantastic new product, signed Martin Bond.

We are now proud to present Bondtech`s latest development, DDG Extruder for Ultimaker2 that feeds filament without grinding and with a very firm grip of the filament that will allow for faster printing without under-extrusion problems and also high retraction prints like Voroni models without grinding.

- Strong housing parts in SLS Nylon in black colour
- Bondtech precision cnc machined gears in hardend steel.
- New driveshaft in cnc machined stainless steel
- New bearings

Parts re-used from Ultimaker 2+ Feeder

- Big plastic gear
- Pushfit connector + bowden clip
- Screws (4x M3x16)
- Filament inlet guide
- Compression spring assembly

This extruder re-uses parts from the Ultimaker2+ feeder (Used on Ultimaker 2+, Ultimaker 2+ Extended, Ultimaker 3, Ultimaker 3 Extended).

If you do not have an Ultimaker 2+ feeder you will not be able to use this extruder. The original stepper motor of the printer will be reused and the extruder will be mounted at the same position and in the same mounting holes as the factory extruder making the installation easy and fast.

Installs in about 20 minutes.

E-steps needs to be updated to 311

Firmware available for Ultimaker 2, Ultimaker 2 Extended, Ultimaker2+, Ultimaker2+ Extended.

This extruder is developed together with C.Matthes in Germany

For documentation: www.bondtech.se/docs

[Installation guide](#)

Recommend to a friend

[Read More](#)

SKU: 7072482001250

Price: € 83,00

Categories: [Ultimaker 2](#), [Other UM Parts](#), [Other Accessories](#),

[Extruders](#)

**BOWDEN PTFE TUBE & CLIPS**

New and updated quality. PTFE, Super-Slippery. Not transparent. Bowden Tube and Clips for UM2. Length 2 cm + (allows you to take a new "grip" by cutting a little).

This tube is a great improvement over the original Bowden.

It has several features making it better, it is super slippery, right size and has a "direction". The end which goes in the back is clearly marked.

Weight	N/A
Dimensions	N/A
Filament Size	1.75mm, 2.85mm

[Read More](#)

Variations

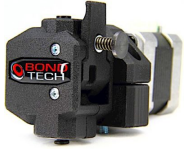
SKU	Description	Filament Size	Price
7072482000635		2.85mm	€ 18,00
7072482000611		1.75mm	€ 25,00

SKU: N/A

Price: € 18,00 - € 25,00

Category: [Other UM Parts](#)

ULTIMAKER Upgrades-3D Printer Nozzles

**BONDTECH QR2 EXTRUDER**

EXTRUDER for UM2 +/- . With Matchless Block V3 we obtain 60 cub. mm plastic/sec. This is 8 x standard UM2. "A 16 hour drone-print finishes in 4 hours". INCLUDES TRACKING extra SHIPPING, so if you order anything else, tracking will be included! This item is HEAVY, it is also FANTASTIC!

This kit gives you everything you need to upgrade your Ultimaker 2 series printer with the Bondtech QR extruder for 2.85/3.0 mm filament, solve your underextrusion and feeding problems and be able to print much faster with sustained quality.

Choose Left or Right side installation, when looking from behind printer. This determines if you want to change the old extruder, or ADD another one.

If you choose to add another one, you can swap the bowden over.

Read this if you plan a full double rig:

If you need double setup, you will also need Bowden w/clips, Pt100 Temp Sensor, Heater, Teflon, Steel Coupler V2 and Block V3. Check first that your UM2 has a hole in the aluminium where the nozzle comes out, and hole in top head plastic assembly for a 2nd Bowden. If your UM2 is newer (end 2016 or 2017 onwards), the main computer board cannot take a 2nd motor at the same time.

This kit fits Ultimaker 2 Go, Ultimaker 2, Ultimaker 2 Extended,

Ultimaker 2+, Ultimaker 2 Extended +

Hundreds of happy users around the world.



Print with flexible filaments with reliability

Kit contains:

- 1 x Bondtech QR Extruder 3.0 mm
- 1 x Mount for Ultimaker 2
- 1 x Cable for steppermotor (plugs into controller)
- 4 x M3x20 screws
- 4 x M3 nuts
- 8 x M3 washers
- 1 x Anti vibration tpu isolator
- 1 x Filament guide
- 1 x Push-fit clip
- 1 x Detailed step by step installation guide
- 1 x Updated firmware for easy installation

Installation guide is downloadable by the link below.

[Assembly guide](#)

Weight	500 kg
Dimensions	15 x 10 x 6 cm
Position looking from Behind	Right Side, Left Side

[Read More](#)

Variations

SKU	Description	Position looking from Behind	Price
7072482001229	For 2.85mm filament. RIGHT SIDE when looking from behind	Right Side	€ 158,00
7072482001236	For 2.85, LEFT SIDE looking from behind	Left Side	€ 158,00

SKU: N/A

Price: € 158,00

Categories: [Ultimaker 2](#), [Other UM Parts](#), [Other Accessories](#), [Extruders](#)